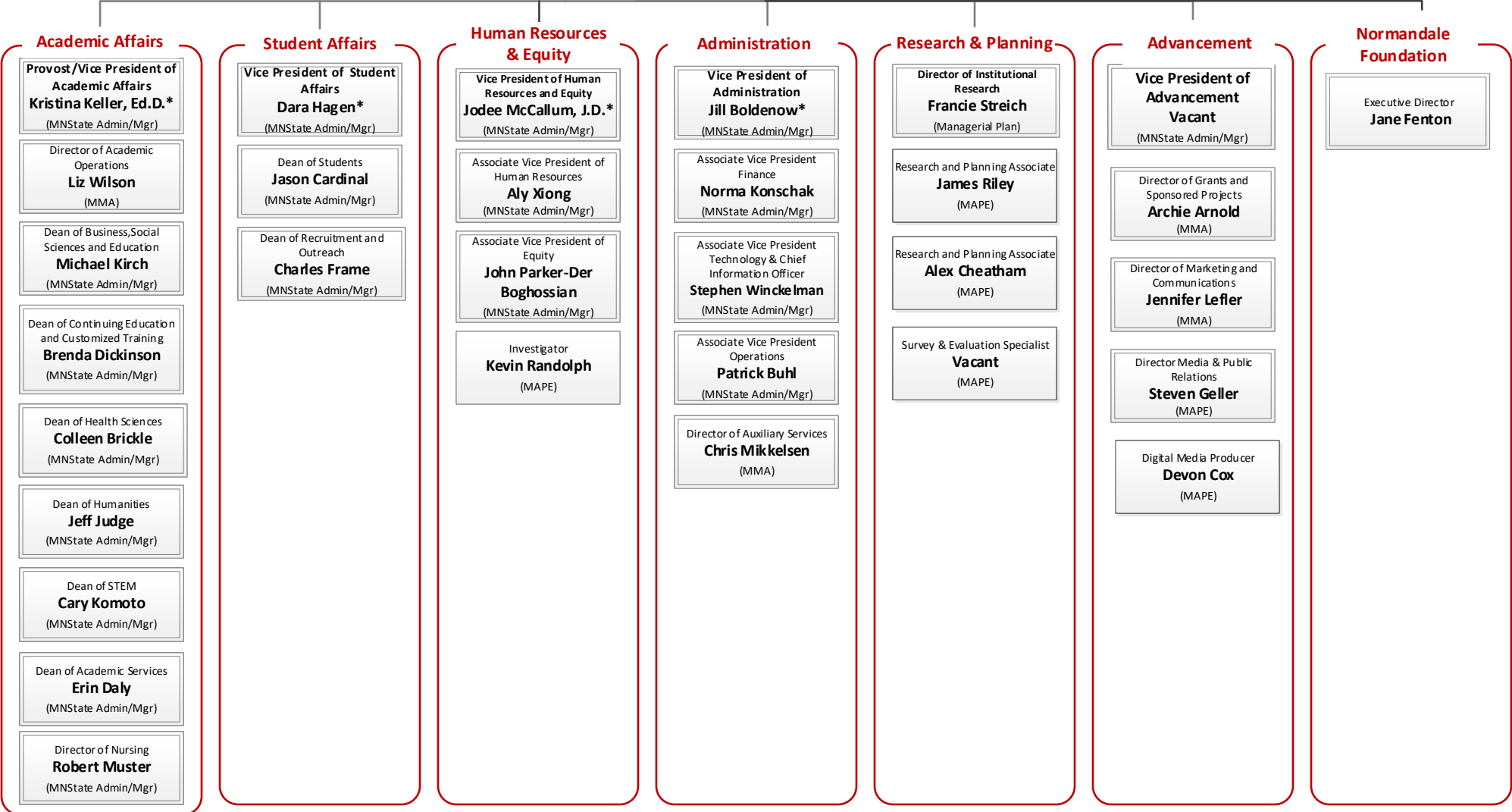


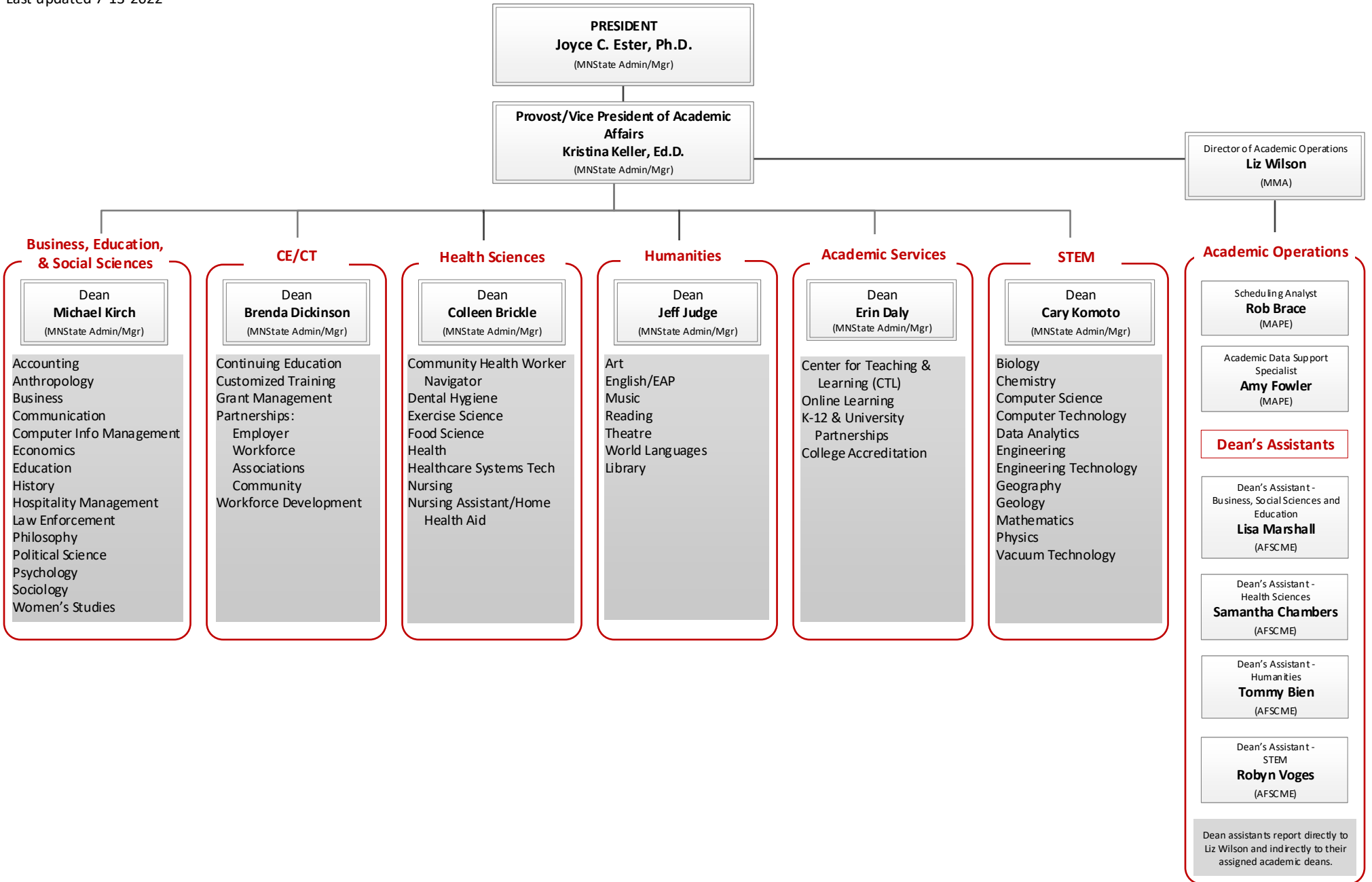
# President's Cabinet\* and Direct Reports

Last updated 9-08-2022



# Academic Affairs

Last updated 7-13-2022



**Business, Education, & Social Sciences**

**Dean Michael Kirch**  
(MNState Admin/Mgr)

- Accounting
- Anthropology
- Business
- Communication
- Computer Info Management
- Economics
- Education
- History
- Hospitality Management
- Law Enforcement
- Philosophy
- Political Science
- Psychology
- Sociology
- Women's Studies

**CE/CT**

**Dean Brenda Dickinson**  
(MNState Admin/Mgr)

- Continuing Education
- Customized Training
- Grant Management
- Partnerships:
  - Employer Workforce
  - Associations
  - Community
  - Workforce Development

**Health Sciences**

**Dean Colleen Brickle**  
(MNState Admin/Mgr)

- Community Health Worker Navigator
- Dental Hygiene
- Exercise Science
- Food Science
- Health
- Healthcare Systems Tech
- Nursing
- Nursing Assistant/Home Health Aid

**Humanities**

**Dean Jeff Judge**  
(MNState Admin/Mgr)

- Art
- English/EAP
- Music
- Reading
- Theatre
- World Languages
- Library

**Academic Services**

**Dean Erin Daly**  
(MNState Admin/Mgr)

- Center for Teaching & Learning (CTL)
- Online Learning
- K-12 & University Partnerships
- College Accreditation

**STEM**

**Dean Cary Komoto**  
(MNState Admin/Mgr)

- Biology
- Chemistry
- Computer Science
- Computer Technology
- Data Analytics
- Engineering
- Engineering Technology
- Geography
- Geology
- Mathematics
- Physics
- Vacuum Technology

**Academic Operations**

**Scheduling Analyst**  
Rob Brace  
(MAPE)

**Academic Data Support Specialist**  
Amy Fowler  
(MAPE)

**Dean's Assistants**

**Dean's Assistant - Business, Social Sciences and Education**  
Lisa Marshall  
(AFSCME)

**Dean's Assistant - Health Sciences**  
Samantha Chambers  
(AFSCME)

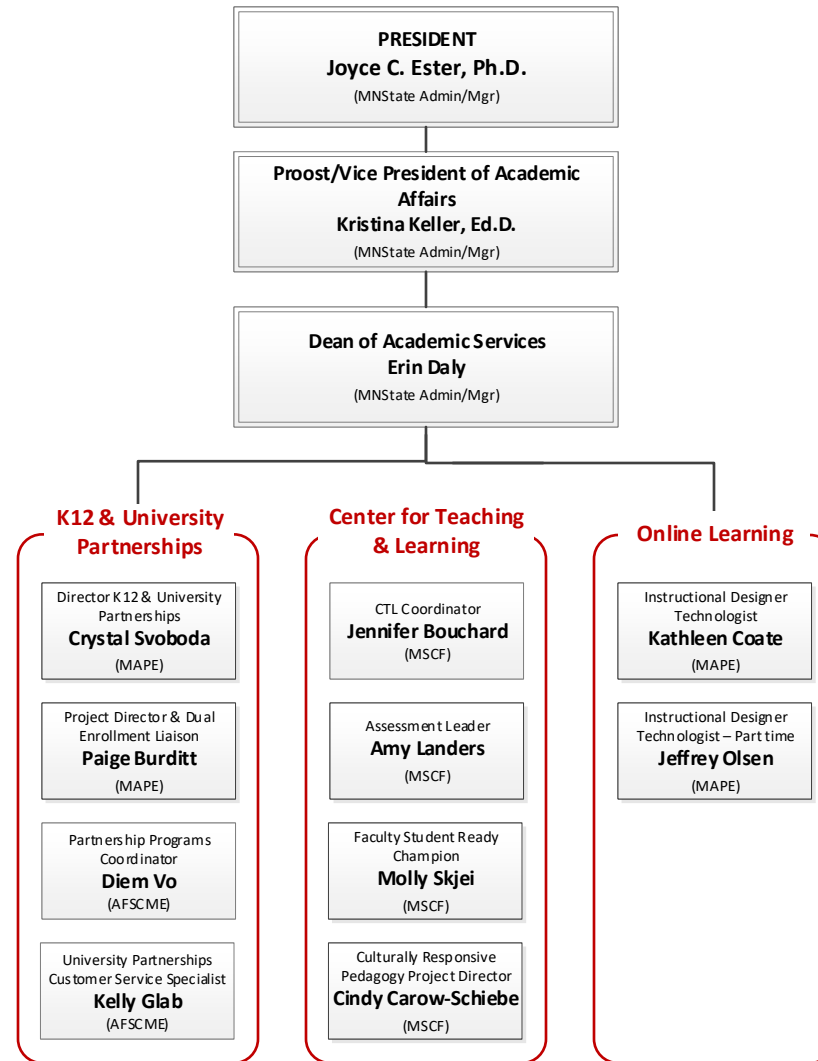
**Dean's Assistant - Humanities**  
Tommy Bien  
(AFSCME)

**Dean's Assistant - STEM**  
Robyn Voges  
(AFSCME)

Dean assistants report directly to Liz Wilson and indirectly to their assigned academic deans.

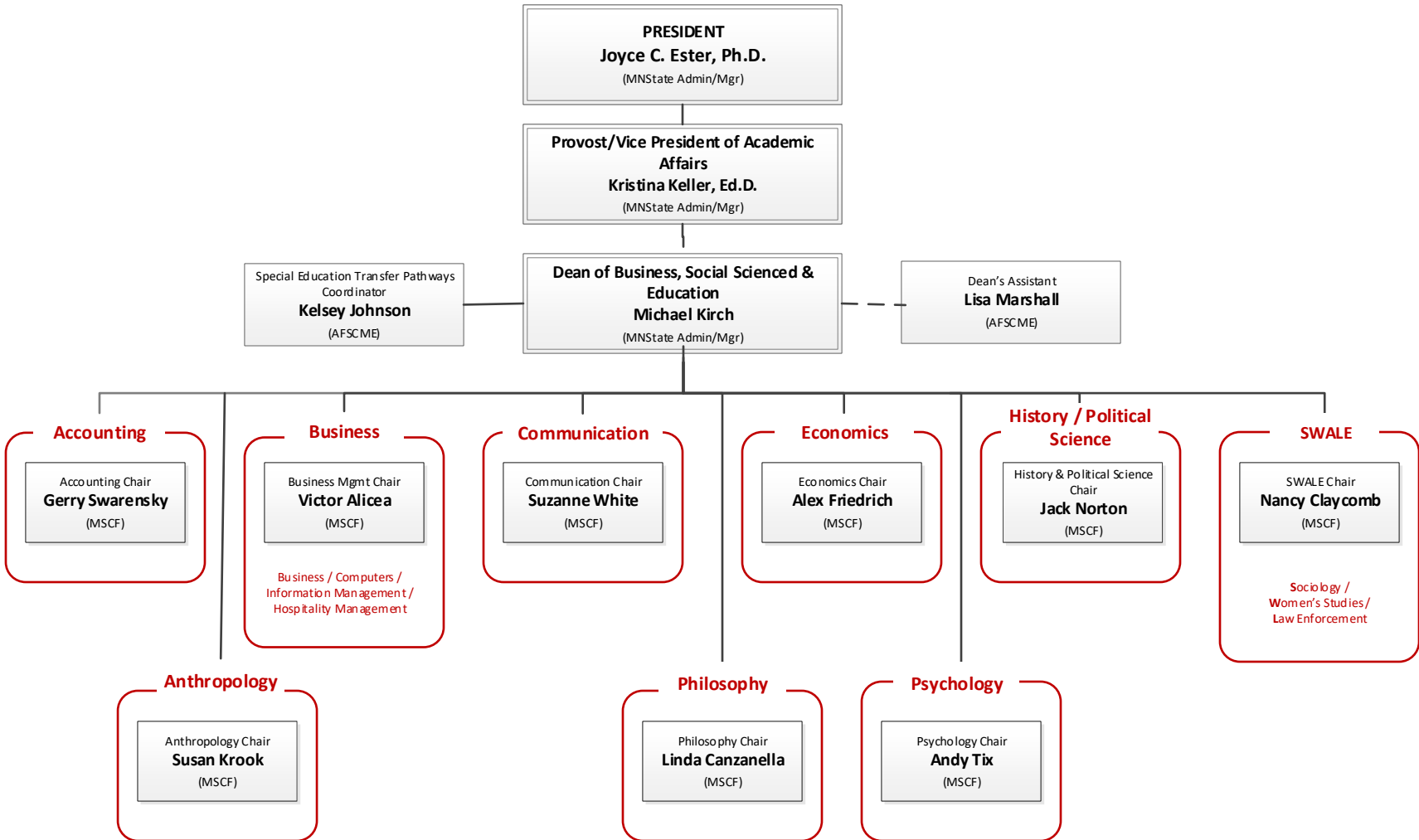
# Academic Affairs: Academic Services

Last updated 2-15-2022



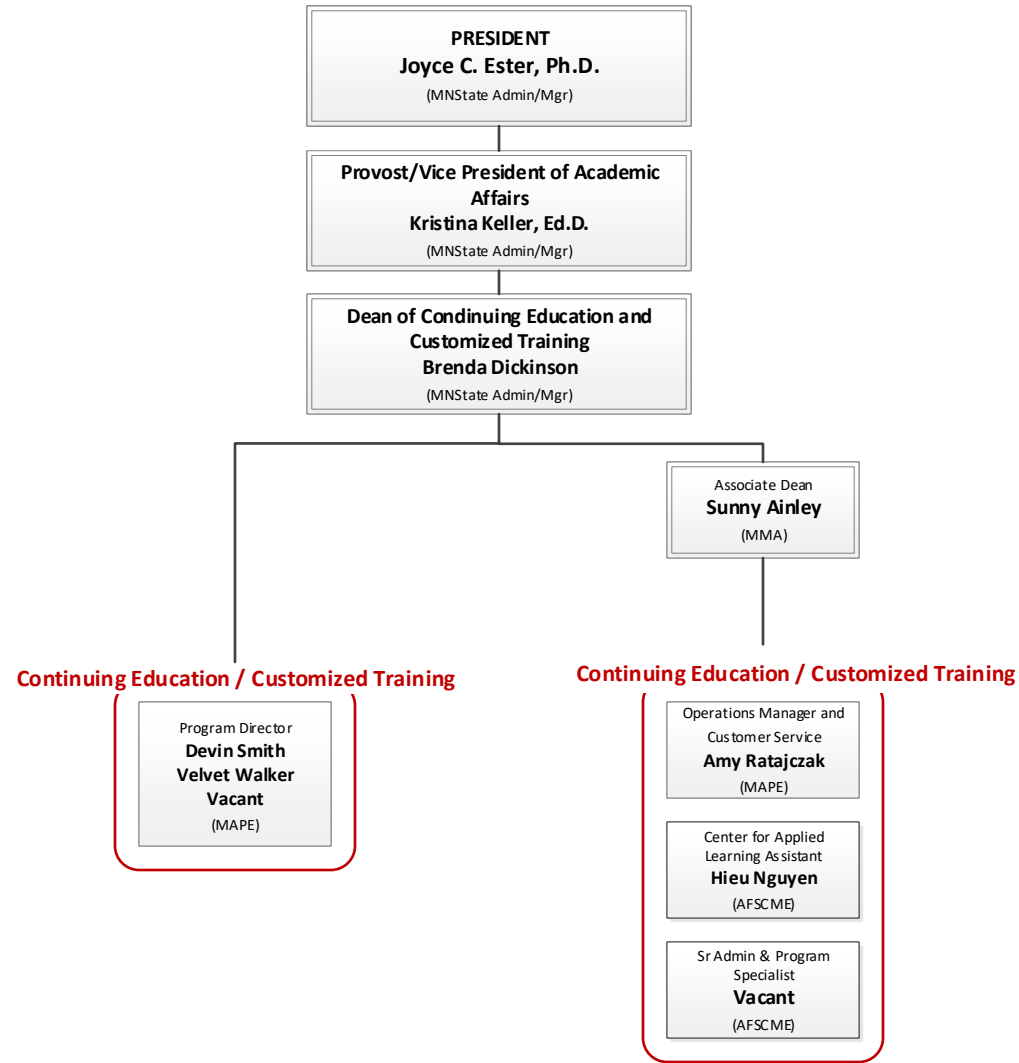
# Academic Affairs: Business, Education, & Social Science

Last updated 9-08-2022



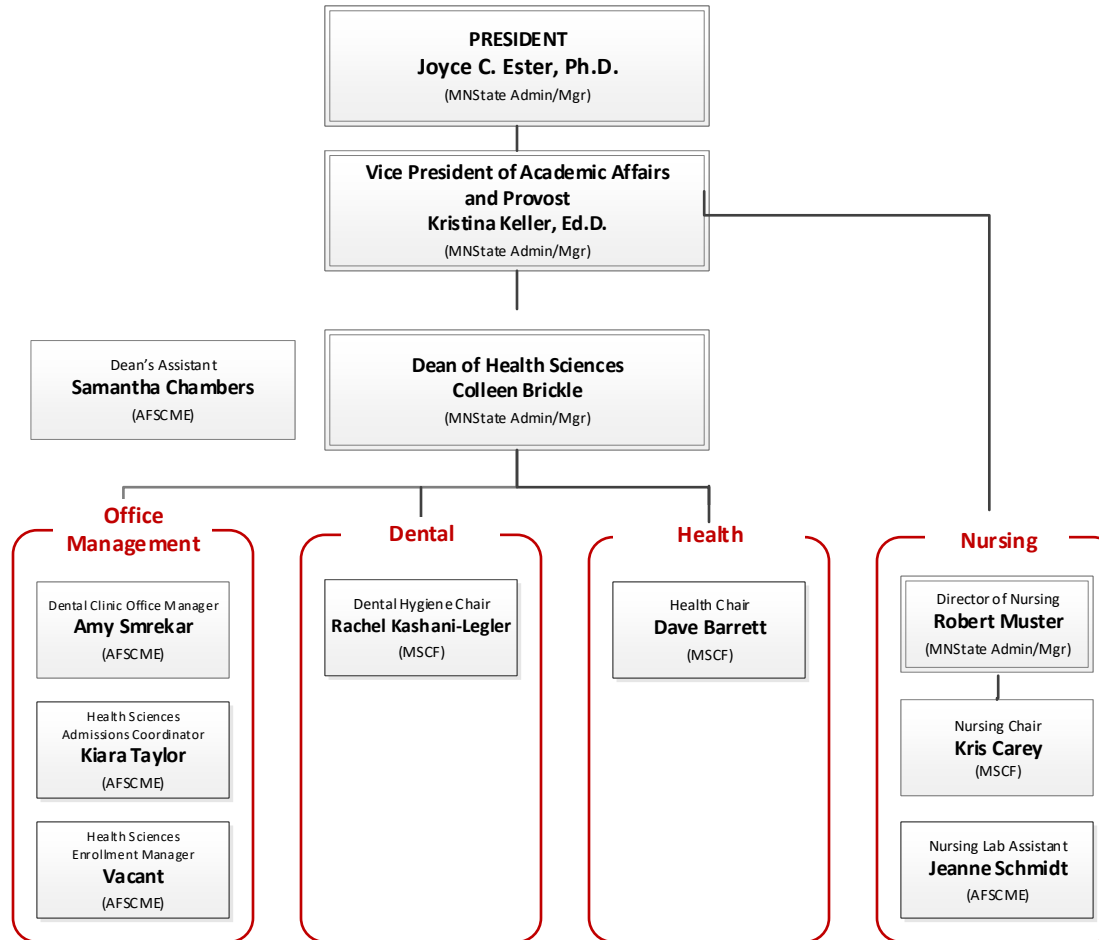
# Academic Affairs: CE/CT

Last updated 12-28-2021



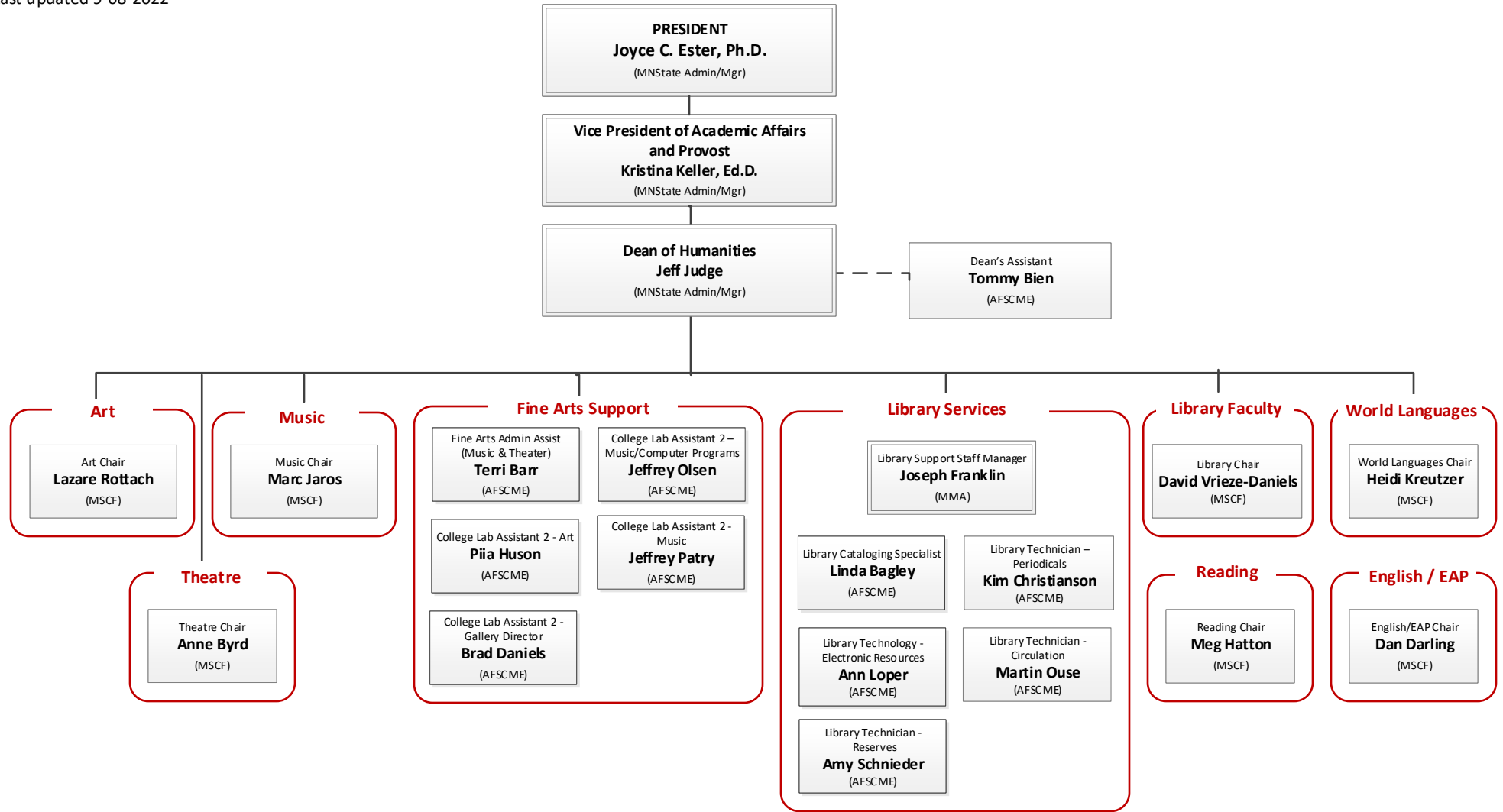
# Academic Affairs: Health Sciences

Last updated 7-13-2022

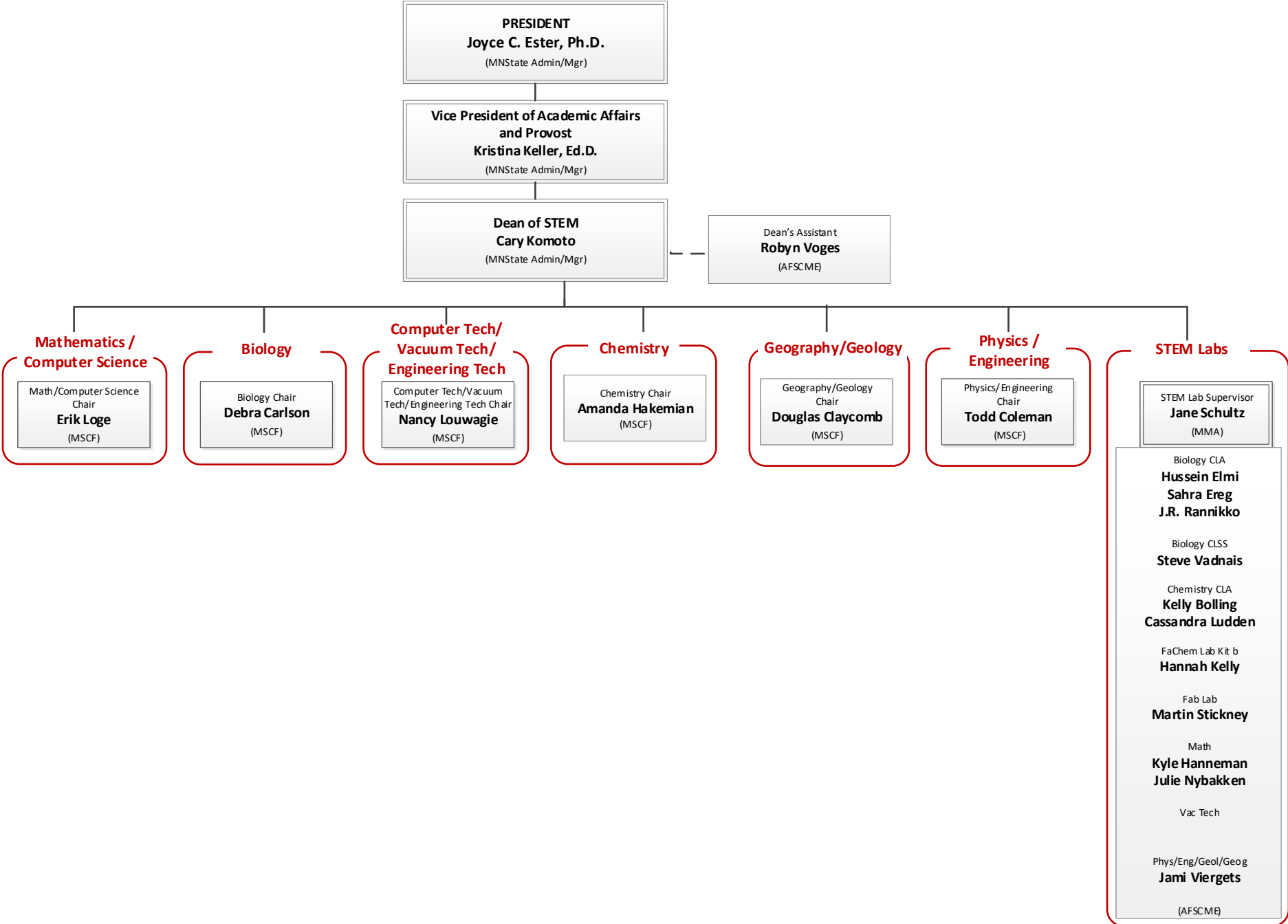


# Academic Affairs: Humanities

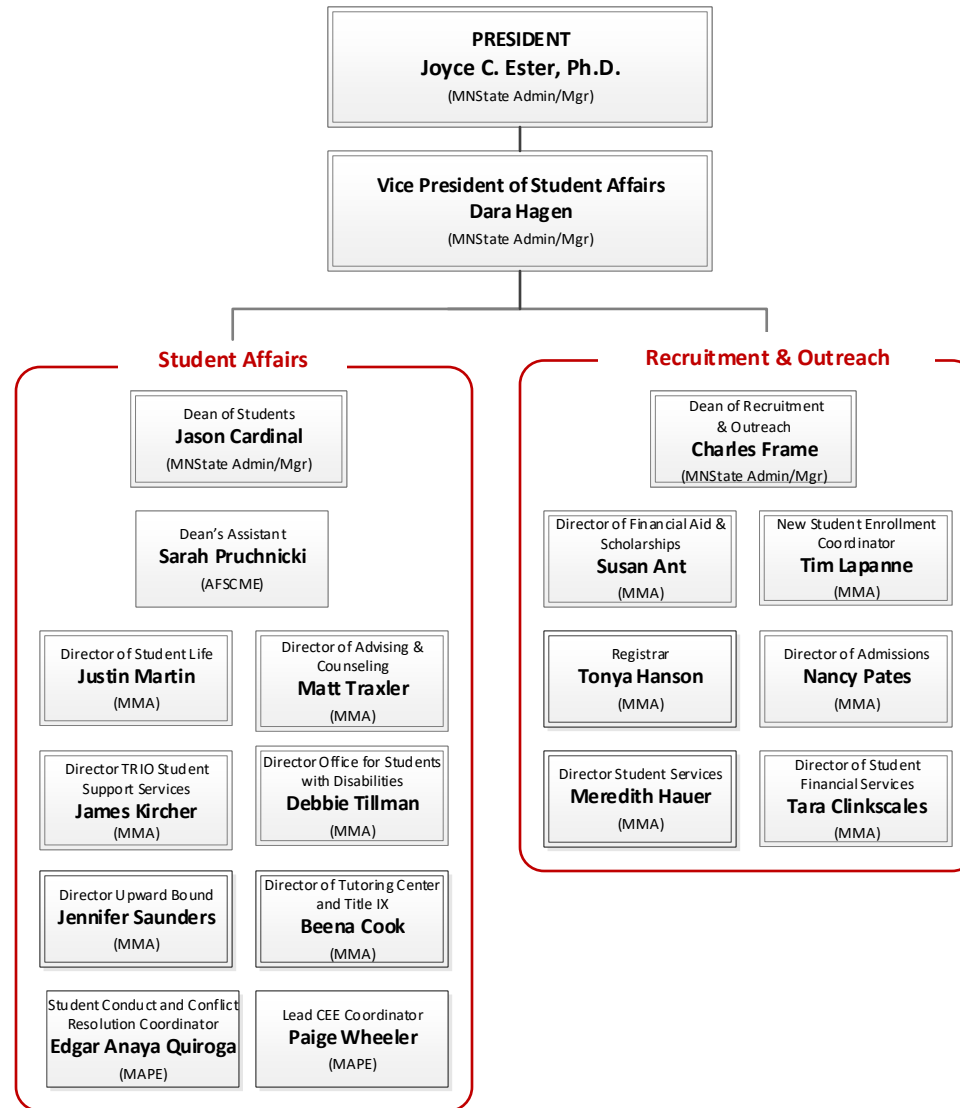
Last updated 9-08-2022



Last updated 9-08-2022

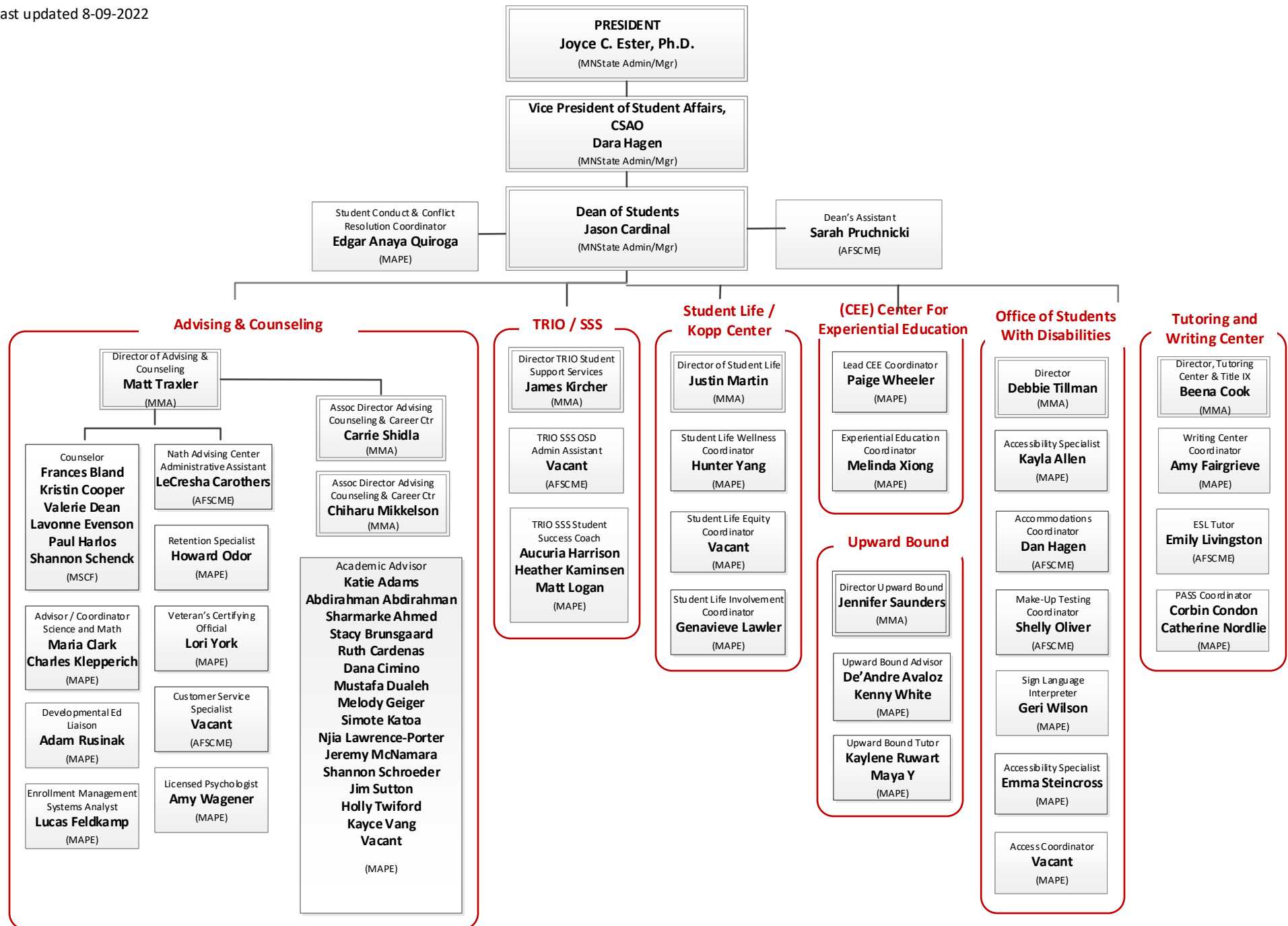






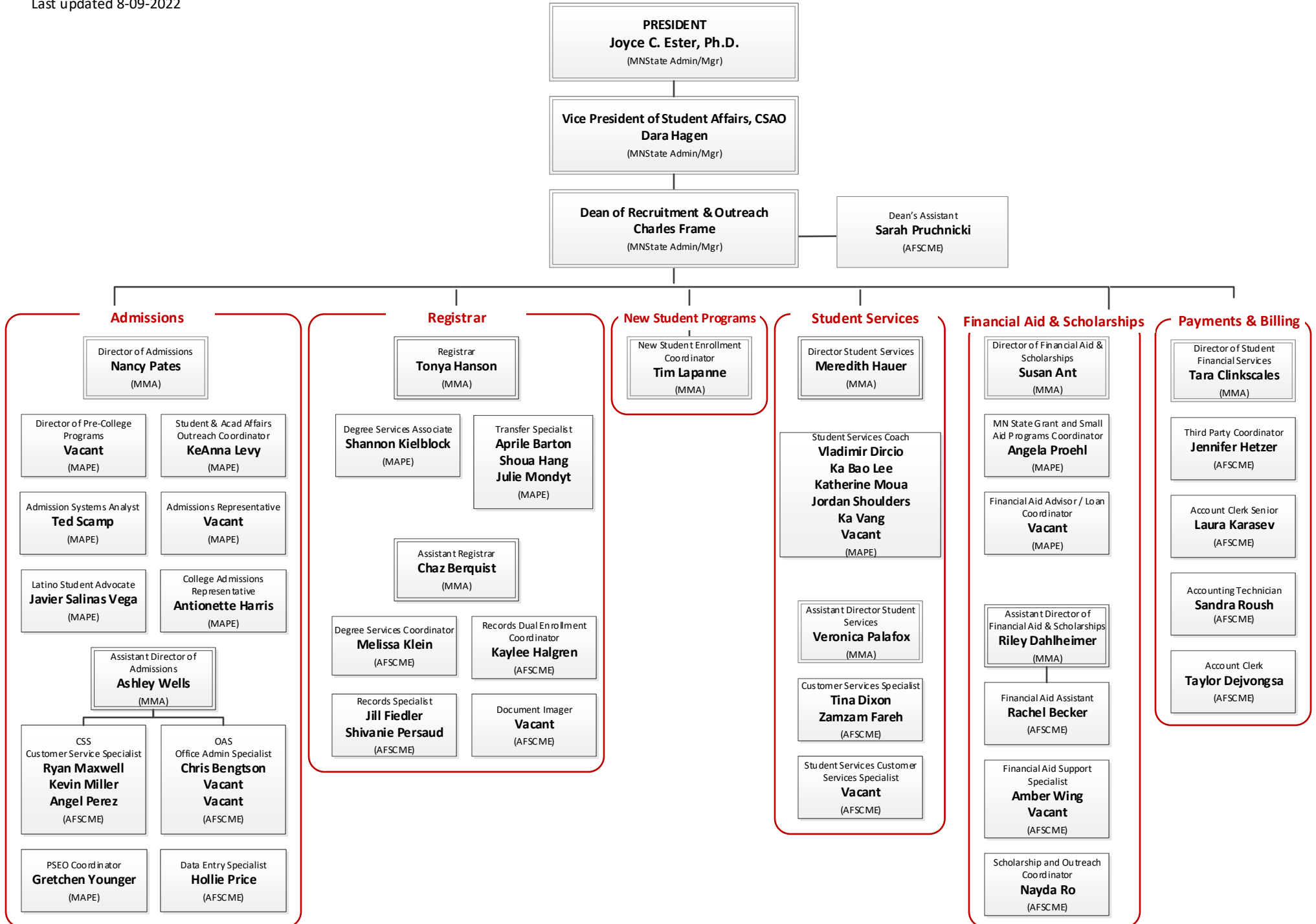
# Student Affairs: Dean of Students

Last updated 8-09-2022



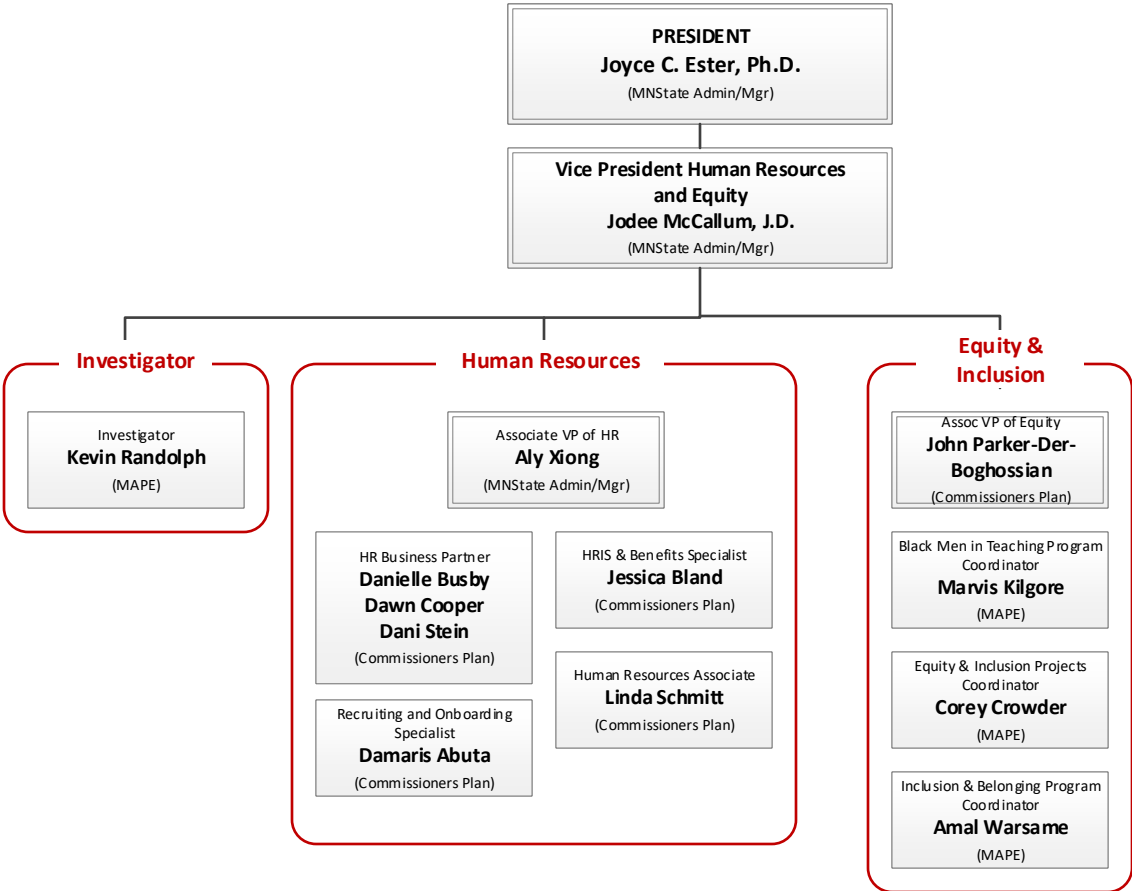
# Student Affairs: Recruitment & Outreach

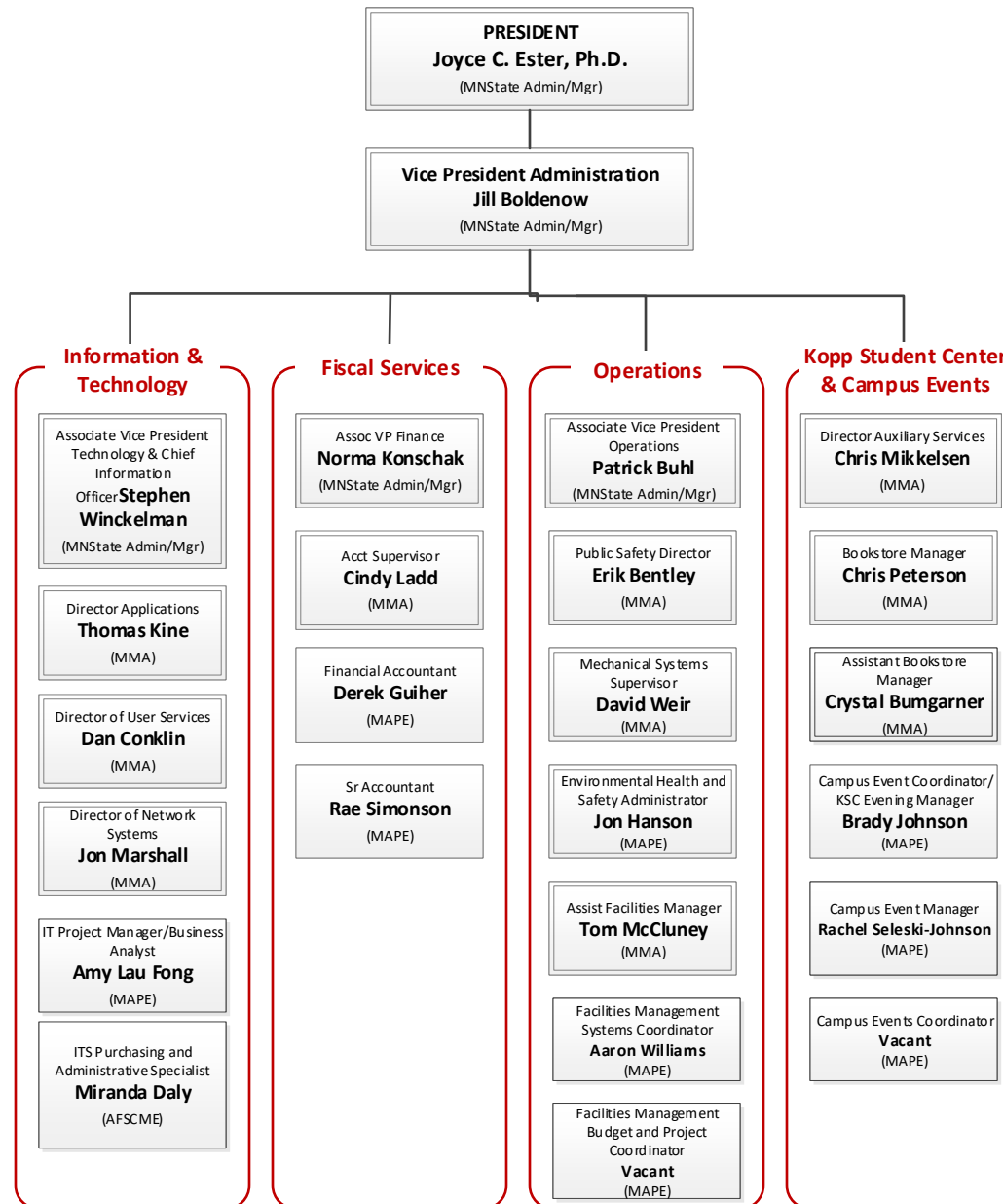
Last updated 8-09-2022

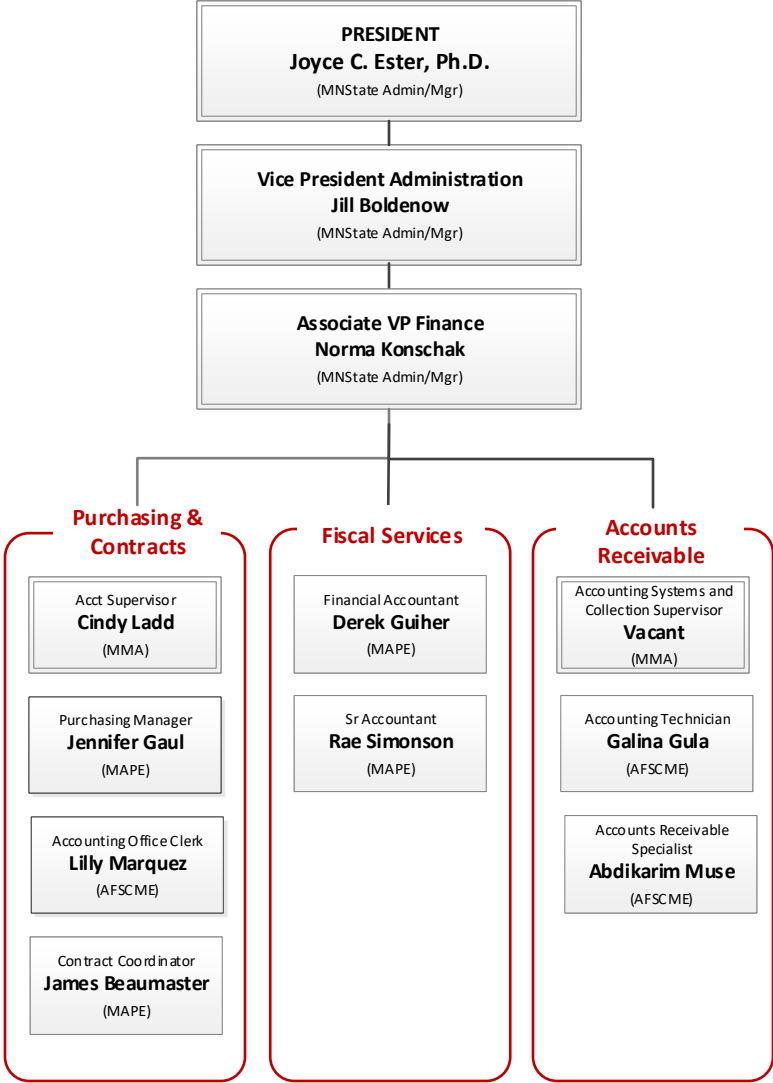


# Human Resources & Equity

Last updated 9-12-2022

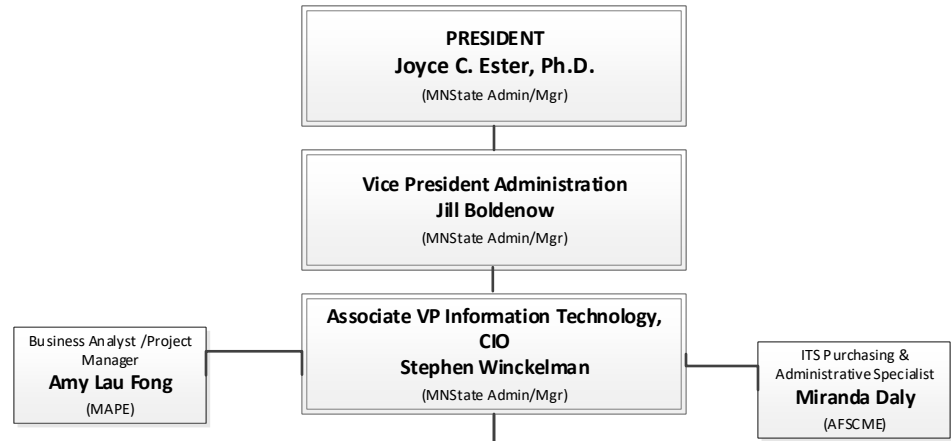






# Administration: Information Technology Services

Last updated 7-13-2022



### Information Technology Services

**Director of User Services**  
**Dan Conklin**  
(MMA)

IT Help Desk Team Lead <b>Vacant</b> (MAPE)	Educational Technology Specialist <b>Chandler Chapman</b> (MAPE)	Copy Center Lead <b>Nancy Albrecht</b> (AFSCME)
IT Support Analyst <b>Abdiqfar Abdalla</b> (MAPE)	Educational Technology Generalist <b>Adam Gillard</b> (MAPE)	
Weekend Computer Center Assistant <b>Vinh Bui</b> (MAPE)	Educational Technology Engineer <b>Tam Huynh</b> (MAPE)	
IT Support Analyst <b>Tim Fadeyev</b> (MAPE)	Media Developer <b>Pavel Ignatenkov</b> (MAPE)	
IT Support Analyst <b>Xeng Thao</b> (MAPE)		

Team

### Application Support

**Director of Applications**  
**Thomas Kine**  
(MMA)

Business Analyst <b>Natalie Dolinko</b> (MAPE)	SharePoint Developer <b>Vacant</b> (MAPE)
Applications Generalist <b>Dylan Hummel</b> (MAPE)	LMS Technology Support Specialist <b>Kris King</b> (MAPE)
Applications Systems Specialist <b>Svitlana Melnichuk</b> (MAPE)	Software Developer <b>Tony Frederick</b> (MAPE)
	Applications Developer <b>Vacant</b> (MAPE)

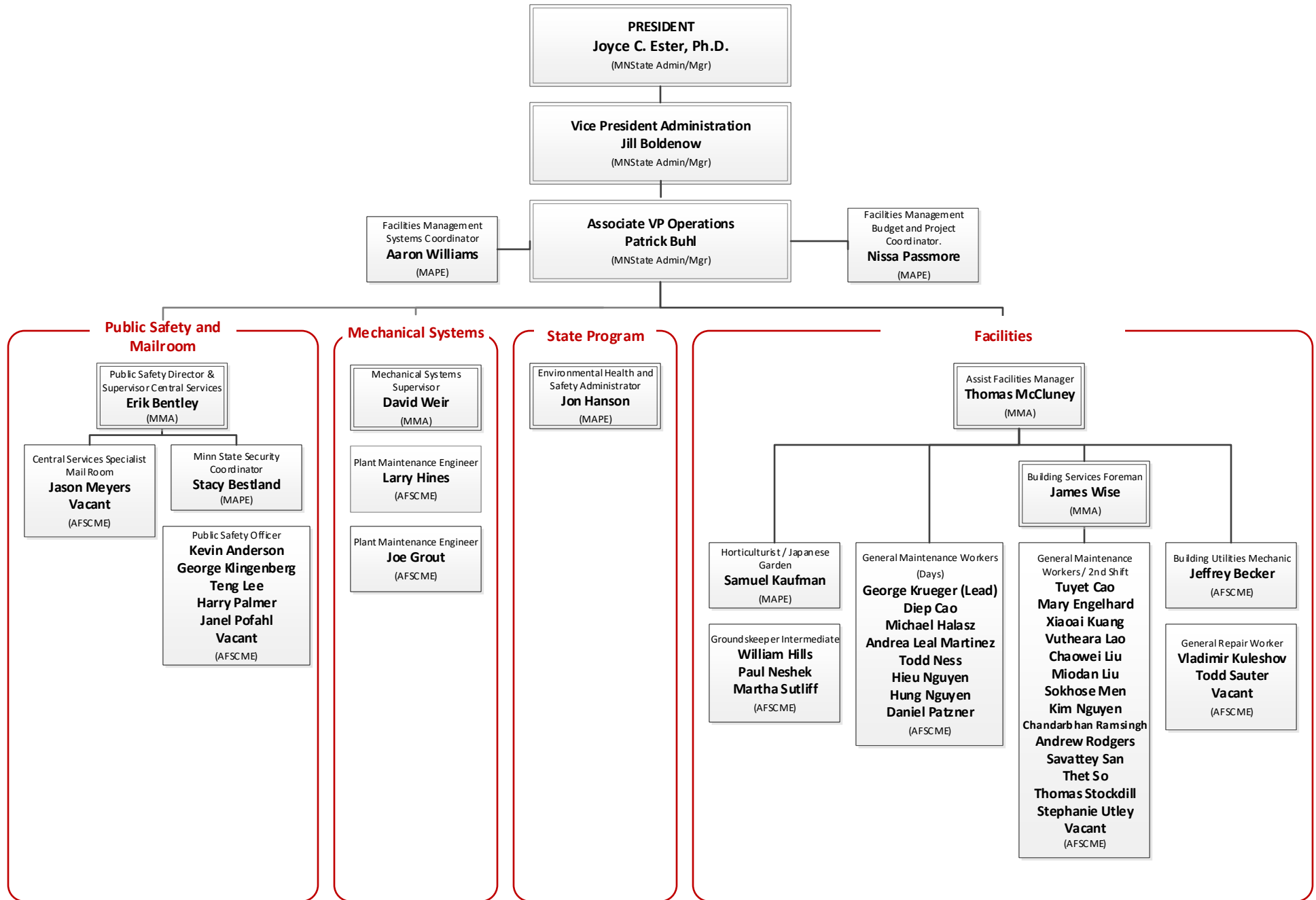
### Infrastructure

**Director of Infrastructure**  
**Jon Marshall**  
(MMA)

Systems Administrator <b>Donald Jerkovich</b> (MAPE)	Network Associate <b>Aziz Moalim</b> (MAPE)	IT Support Specialist <b>Scott Schlenker</b> (MAPE)
Network Administrator <b>Chue Lor</b> (MAPE)	Sr Network & Systems Engineer <b>Chuong Nguyen</b> (MAPE)	Data Architect <b>Patrick Walker</b> (MAPE)
Application Developer & Database Administrator <b>Thang Nguyen</b> (MAPE)		End Point Device Supervisor <b>Vacant</b> (MMA)
IT Systems Specialist <b>Peter O'Dell</b> (MAPE)	IT Systems Specialist <b>Clayton Petty</b> (MAPE)	IT System Specialist Temporary Position <b>Noah Sargent</b> (MAPE)
IT Systems Analyst Temporary Position <b>Haley Sargent</b> (MAPE)	IT Systems Administrator <b>Liliya Tsibulko</b> (MAPE)	IT Systems Analyst Temporary Position <b>Albert Zhemkov</b> (MAPE)
		IT Systems Analyst <b>Nathaniel Schlenker</b> (MAPE)

# Administration: Facilities Management

Last updated 4-28-2022





# Administration: Auxiliary Services

Last updated 8-09-2022

